

# ROYAL B & X



XX  
MEISSEN  
1710

# R

## ROYAL B & X

OPULENCE FOR THE TABLE



**Magnificent and almost wasteful was the order of the day when creating this masterpiece of European dining culture:**

Royal Blue, elaborate reliefs and edges covered in a 23-karat gold layer and decorated in a glamorous way – the service “B & X” shape by Ernst August Leuteritz, created between 1844 and 1855, has the typical style characteristics of Historicism. This





style is known for its free reference to past style elements, mainly from the Renaissance, Baroque or Rococo periods, some of which were combined together. Such opulent porcelain, often decorated across the whole surface and finished with gold, catered for the needs of the bourgeoisie with newly-acquired wealth.

Choosing the name for this era-defining piece of beauty was rather more practical: the letters B and X stand for the identification numbers on the original moulds.











ROYAL SHEEN IN GOLD AND WHITE:  
THE FAMOUS SERVICE "B-SHAPE"



## ROYAL B & X GOLD BRONZE

The high-karat gold bronze on the opulent relief, edges and ornaments of the plates, cups and pots is rich and bright. It is still applied by hand to the unglazed porcelain surfaces of the “ROYAL B & X” shapes. The third firing is what gives the gold its special silky matt shimmer. It is the harmonious interplay of white surface with gold elements that makes this service particularly appealing.



# SETS B-SHAPE GOLD BRONZE



**COFFEE SET**  
8-piece set: 2 coffee cups, 2 saucers, 1 creamer, 1 sugar bowl, 2 dessert plates in gold bronze  
999979-C1502-1



**COFFEE SERVING SET**  
6-piece set: 2 coffee cups, 2 saucers, 2 dessert plates in gold bronze  
999979-C1503-1



**COFFEE CUP SET**  
4-piece set: 2 coffee cups, 2 saucers in gold bronze  
999979-C1504-1



**ESPRESSO SET**  
4-piece set: 2 espresso cups, 2 saucers in gold bronze  
999979-C1507-1



**TEA SET**  
8-piece set: 2 tea cups, 2 saucers, 1 pot, 1 sugar bowl, 2 dessert plates in gold bronze  
999979-C1505-1



**DINNER SET**  
6-piece set: 2 soup plates, 2 dinner plates, 2 dessert plates in gold bronze  
999979-C1506-1



**DESSERT DISH SET**  
2-piece set: 2 dessert dishes in gold bronze  
999979-C1508-1

# COLLECTION B-SHAPE GOLD BRONZE

## PLATES



**PLATE**  
Ø 15.5 cm, 6 1/8" · 999979-15500-1



**PLATE**  
Ø 19 cm, 7 1/2" · 999979-15501-1



**STARTER PLATE**  
Ø 22 cm, 8 5/8" · 999979-15473-1



**DINNER PLATE**  
Ø 28 cm, 11" · 999979-15479-1



**SOUP PLATE**  
Ø 24 cm, 9 1/2" · 999979-15489-1

## PLATTERS



**PLATTER**  
L 44 cm, 17 3/8" · 999979-15298-1



**PLATTER**  
L 29 cm, 11 3/8" · 999979-15508-1









# COLLECTION B-SHAPE GOLD BRONZE

## COFFEE AND TEA



ESPRESSO CUP, COMPLETE  
V 0.07 l, 2 1/2 oz · 999979-15580-1



COFFEE CUP, COMPLETE  
V 0.16 l, 5 5/8 oz · 999979-15582-1



COFFEE POT  
V 1.5 l, 52 3/4 oz · 999979-15695-1



TEAPOT  
V 1.2 l, 42 1/4 oz · 999979-15727-1



CREAMER  
V 0.18 l, 6 3/8 oz · 999979-15765-1



SUGAR BOWL  
H 10 cm, 4" · 999979-15823-1

## BOWLS AND DISHES



BOWL WITH LID  
V 1.2 l, 42 1/4 oz · 999979-15381-1



BOWL  
Ø 27 cm, 10 5/8" · 999979-15442-1



ROASTING PLATTER  
L 40 cm, 15 3/4" · 999979-15308-1



DESSERT DISH  
Ø 14.7 cm, 5 3/4" · 999979-15411-1



SAUCE BOAT  
V 0.45 l, 15 7/8 oz · 999979-15228-1





SETS X-SHAPE GOLD BRONZE



**COFFEE SET**  
6-piece set: 2 coffee cups, 2 saucers, 1 creamer,  
1 sugar bowl, 2 dessert plates in gold bronze  
999979-C1702-1



**COFFEE SERVING SET**  
6-piece set: 2 coffee cups, 2 saucers,  
2 dessert plates in gold bronze  
999979-C1703-1



**COFFEE CUP SET**  
4-piece set: 2 coffee cups,  
2 saucers in gold bronze  
999979-C1704-1



**ESPRESSO SET**  
4-piece set: 2 espresso cups,  
2 saucers in gold bronze  
999979-C1707-1



**TEA SET**  
6-piece set: 2 tea cups, 2 saucers, 1 pot,  
1 sugar bowl, 2 dessert plates in gold bronze  
999979-C1705-1



**DINNER SET**  
6-piece set: 2 soup plates, 2 dinner plates,  
2 dessert plates in gold bronze  
999979-C1706-1



**DESSERT DISH SET**  
2-piece set: 2 dessert dishes in gold bronze  
999979-C1708-1

COLLECTION X-SHAPE GOLD BRONZE

PLATES



**PLATE**  
Ø 14 cm, 5 1/2" · 999979-17500-1



**PLATE**  
Ø 19 cm, 7 1/2" · 999979-17501-1



**STARTER PLATE**  
Ø 22.5 cm, 8 7/8" · 999979-17473-1



**DINNER PLATE**  
Ø 28 cm, 11" · 999979-17479-1



**SOUP PLATE**  
Ø 25 cm, 9 7/8" · 999979-17489-1

PLATTERS



**PLATTER**  
Ø 29 cm, 11 3/8" · 999979-17508-1



# COLLECTION X-SHAPE GOLD BRONZE

## COFFEE AND TEA



ESPRESSO CUP, COMPLETE  
V 0.10 l, 3 1/2 oz · 999979-17580-1



COFFEE CUP, COMPLETE  
V 0.16 l, 5 5/8 oz · 999979-17582-1



COFFEE POT  
V 1.5 l, 52 3/4 oz · 999979-17695-1



TEAPOT  
V 1.3 l, 45 3/4 oz · 999979-17727-1



CREAMER  
V 0.33 l, 11 5/8 oz · 999979-17764-1



SUGAR BOWL  
H 13.5 cm, 5 3/8" · 999979-17823-1

## BOWLS AND DISHES



BOWL WITH LID  
V 0.7 l, 24 5/8 oz · 999979-17381-1



BOWL  
Ø 27.5 cm, 10 7/8" · 999979-17442-1



ROASTING PLATTER  
L 36 cm, 14 1/8" · 999979-17308-1



DESSERT DISH  
Ø 14.8 cm, 5 7/8" · 999979-17411-1



SAUCIERE  
V 0,4 l · 999979-17228-1





# ROYAL B & X ROYAL BLUE

The playful “ROYAL B & X” shapes have a literal royal sheen thanks to their Royal Blue background: deep, bright and luxurious. The effect of the colour is strengthened by the elaborate relief in gold bronze. A service that has represented cosmopolitan luxury and exquisite coffee culture ever since it was invented in the 19th century.





SETS B-FORM ROYAL BLUE



**COFFEE SET**  
8-piece set: 2 coffee cups, 2 saucers, 1 creamer, 1 sugar bowl, 2 dessert plates in Royal Blue  
011079-C1502-1



**COFFEE SERVING SET**  
6-piece set: 2 coffee cups, 2 saucers, 2 dessert plates in Royal Blue  
011079-C1503-1



**COFFEE CUP SET**  
44-piece set: 2 coffee cups, saucers in Royal Blue  
011079-C1504-1



**ESPRESSO SET**  
4-piece set: 2 espresso cups, 2 saucers in Royal Blue  
011079-C1507-1



**TEA SET**  
8-piece set: 2 tea cups, 2 saucers, 1 pot, 1 sugar bowl, 2 dessert plates in Royal Blue  
011079-C1505-1



**DINNER SET**  
6-piece set: 2 soup plates, 2 dinner plates, 2 dessert plates in Royal Blue  
011079-C1506-1



**DESSERT DISH SET**  
2-piece set: 2 dessert dishes in Royal Blue  
011079-C1508-1

COLLECTION B-SHAPE ROYAL BLUE

PLATES



**PLATE**  
Ø 15.5 cm, 6 1/8" · 011079-15500-1



**PLATE**  
Ø 19 cm, 7 1/2" · 011079-15501-1



**DINNER PLATE**  
Ø 22 cm, 8 5/8" · 011079-15473-1



**DINNER PLATE**  
Ø 28 cm, 11" · 011079-15479-1



**SOUP PLATE**  
Ø 24 cm, 9 1/2" · 011079-15489-1

PLATTERS



**PLATTER**  
L 44 cm, 17 3/8" · 011079-15298-1



**PLATTER**  
L 44 cm, 17 3/8" · 011079-15508-1





# COLLECTION B-SHAPE ROYAL BLUE

## COFFEE AND TEA



ESPRESSO CUP, COMPLETE  
V 0.07 l, 2 1/2 oz · 011079-15580-1



COFFEE CUP, COMPLETE  
V 0.16 l, 5 5/8 oz · 011079-15582-1



COFFEE POT  
V 1.5 l, 52 3/4 oz · 011079-15695-1



TEAPOT  
V 1.2 l, 42 1/4 oz · 011079-15727-1



CREAMER  
V 0.18 l, 6 3/8 oz · 011079-15765-1



SUGAR BOWL  
H 10 cm, 4" · 011079-15823-1

## BOWLS AND DISHES



BOWL WITH LID  
V 1.2 l, 42 1/4 oz · 011079-15381-1



BOWL  
Ø 27 cm, 10 5/8" · 011079-15442-1



ROASTING PLATTER  
L 40 cm, 15 3/4" · 011079-15308-1



DESSERT DISH  
Ø 14.7 cm, 5 3/4" · 011079-15411-1



SAUCE BOAT  
V 0.45 l, 15 7/8 oz · 011079-15228-1



SETS X-SHAPE ROYAL BLUE



**COFFEE SET**  
8-piece set: 2 coffee cups, 2 saucers, 1 creamer, 1 sugar bowl, 2 dessert plates in Royal Blue  
011079-C1702-1



**COFFEE SERVING SET**  
6-piece set: 2 coffee cups, 2 saucers, 2 dessert plates in Royal Blue  
011079-C1703-1



**COFFEE CUP SET**  
4-piece set: 2 coffee cups, 2 saucers in Royal Blue  
011079-C1704-1



**ESPRESSO SET**  
4-piece set: 2 espresso cups, 2 saucers in Royal Blue  
011079-C1707-1



**TEA SET**  
8-piece set: 2 tea cups, 2 saucers, 1 pot, 1 sugar bowl, 2 dessert plates in Royal Blue  
011079-C1705-1



**DINNER SET**  
6-piece set: 2 soup plates, 2 dinner plates, 2 dessert plates in Royal Blue  
011079-C1706-1



**DESSERT DISH SET**  
2-piece set: 2 dessert dishes in Royal Blue  
011079-C1708-1

COLLECTION X-SHAPE ROYAL BLUE

PLATES



**PLATE**  
Ø 14 cm, 5 1/2" · 011079-17500-1



**PLATE**  
Ø 19 cm, 7 1/2" · 011079-17501-1



**STARTER PLATE**  
Ø 22.5 cm, 8 7/8" · 011079-17473-1



**DINNER PLATE**  
Ø 28 cm, 11" · 011079-17479-1



**SOUP PLATE**  
Ø 25 cm, 9 7/8" · 011079-17489-1

PLATTERS



**PLATTER**  
L 29 cm, 11 3/8" · 011079-17508-1



# COLLECTION X-SHAPE ROYAL BLUE

## COFFEE AND TEA



ESPRESSO CUP, COMPLETE  
V 0.10 l, 3 1/2 oz · 011079-17580-1



COFFEE CUP, COMPLETE  
V 0.16 l, 5 5/8 oz · 011079-17582-1



COFFEE POT  
V 1.5 l, 52 3/4 oz · 011079-17695-1



TEAPOT  
V 1.3 l, 45 3/4 oz · 011079-17727-1



CREAMER  
V 0.33 l, 11 5/8 oz · 011079-17764-1



SUGAR BOWL  
H 13.5 cm, 5 3/8" · 011079-17823-1

## BOWLS AND DISHES



BOWL WITH LID  
V 0.7 l, 24 5/8 oz · 011079-17381-1



BOWL  
Ø 27.5 cm, 10 7/8" · 011079-17442-1



ROASTING PLATTER  
L 36 cm, 14 1/8" · 011079-17308-1



DESSERT DISH  
Ø 14.8 cm, 5 7/8" · 011079-17411-1



SAUCE BOAT  
V 0.40 l, 14 1/8 oz · 011079-17228-1





## ROYAL B & X STREWN FLOWERS WITH GOLD BRONZE

Depicting blossoms and flowers in all their natural beauty was the impetus and inspiration for the development of “European floral painting”, which differed from the “Indian” painting that was based on east Asian templates, from the 1830s onwards. The “Strewn Flowers” are one of the most popular floral décors in the manufactory’s history and give the royal, opulent B & X shapes a sense of charm and freshness.



# SETS B-SHAPE

## STREWN FLOWERS WITH GOLD BRONZE



**COFFEE SET**  
8-piece set: 2 coffee cups, 2 saucers, 1 creamer, 1 sugar bowl, 2 dessert plates with Strewn Flowers and gold bronze  
010179-C1502-1



**COFFEE SERVING SET**  
6-piece set: 2 coffee cups, 2 saucers, 2 dessert plates with Strewn Flowers and gold bronze  
010179-C1503-1



**COFFEE CUP SET**  
4-piece set: 2 coffee cups, 2 saucers with Strewn Flowers and gold bronze  
010179-C1504-1



**ESPRESSO CUP SET**  
4-piece set: 2 espresso cups, 2 saucers with Strewn Flowers and gold bronze  
010179-C1507-1



**TEA SET**  
8-piece set: 2 tea cups, 2 saucers, 1 pot, 1 sugar bowl, 2 dessert plates with Strewn Flowers and gold bronze  
010179-C1505-1



**DINNER SET**  
6-piece set: 2 soup plates, 2 dinner plates, 2 dessert plates with Strewn Flowers and gold bronze  
010179-C1506-1



**DESSERT DISH SET**  
2-piece set: 2 dessert dishes with Strewn Flowers and gold bronze  
010179-C1508-1

# COLLECTION B-SHAPE

## STREWN FLOWERS WITH GOLD BRONZE

### PLATES



**PLATE**  
Ø 15.5 cm, 6 1/8" · 010179-15500-1



**PLATE**  
Ø 19 cm, 7 1/2" · 010179-15501-1



**STARTER PLATE**  
Ø 22 cm, 8 5/8" · 010179-15473-1



**DINNER PLATE**  
Ø 28 cm, 11" · 010179-15479-1



**SOUP PLATE**  
Ø 24 cm, 9 1/2" · 010179-15489-1

### PLATTERS



**PLATTER**  
L 44 cm, 17 3/8" · 010179-15298-1



**PLATTER**  
L 29 cm, 11 3/8" · 010179-15508-1





# COLLECTION B-SHAPE

## STREWN FLOWERS WITH GOLD BRONZE

### COFFEE AND TEA



ESPRESSO CUP, COMPLETE  
V 0.07 l, 2 1/2 oz · 010179-15580-1



COFFEE CUP, COMPLETE  
V 0.16 l, 5 5/8 oz · 010179-15582-1



COFFEE POT  
V 1.5 l, 52 3/4 oz · 010179-15695-1



TEAPOT  
V 1.2 l, 42 1/4 oz · 010179-15727-1



CREAMER  
V 0.18 l, 6 3/8 oz · 010179-15765-1



SUGAR BOWL  
H 10 cm, 4" · 010179-15823-1

### BOWLS AND DISHES



BOWL WITH LID  
V 1.2 l, 42 1/4 oz · 010179-15381-1



BOWL  
Ø 27 cm, 10 5/8" · 010179-15442-1



ROASTING PLATTER  
L 40 cm, 15 3/4" · 010179-15308-1



DESSERT DISH  
Ø 14.7 cm, 5 3/4" · 010179-15411-1



SAUCE BOAT, COMPLETE  
V 0.45 l, 15 7/8 oz · 010179-15228-1





# SETS X-SHAPE

## STREWN FLOWERS WITH GOLD BRONZE



**COFFEE SET**  
8-piece set: 2 coffee cups, 2 saucers, 1 creamer, 1 sugar bowl, 2 dessert plates with Strewn Flowers and gold bronze  
010179-C1702-1



**COFFEE SERVING SET**  
6-piece set: 2 coffee cups, 2 saucers, 2 dessert plates with Strewn Flowers and gold bronze  
010179-C1703-1



**COFFEE CUP SET**  
4-piece set: 2 coffee cups, 2 saucers with Strewn Flowers and gold bronze  
010179-C1704-1



**ESPRESSO SET**  
4-piece set: 2 espresso cups, 2 saucers with Strewn Flowers and gold bronze  
010179-C1707-1



**TEA SET**  
8-piece set: 2 tea cups, 2 saucers, 1 pot, 1 sugar bowl, 2 dessert plates with Strewn Flowers and gold bronze  
010179-C1705-1



**DINNER SET**  
6-piece set: 2 soup plates, 2 dinner plates, 2 dessert plates with Strewn Flowers and gold bronze  
010179-C1706-1



**DESSERT DISH SET**  
2-piece set: 2 dessert dishes with Strewn Flowers and gold bronze  
010179-C1708-1



# COLLECTION X-SHAPE

## STREWN FLOWERS WITH GOLD BRONZE

### PLATES



PLATE  
Ø 14 cm, 5 1/2" · 010179-17500-1



PLATE  
Ø 19 cm, 7 1/2" · 010179-17501-1



STARTER PLATE  
Ø 22.5 cm, 8 7/8" · 010179-17473-1



DINNER PLATE  
Ø 28 cm, 11" · 010179-17479-1



SOUP PLATE  
Ø 25 cm, 9 7/8" · 010179-17489-1

### PLATTERS



PLATTER  
L 29 cm, 11 3/8" · 010179-17508-1

# COLLECTION X-SHAPE

## STREWN FLOWERS WITH GOLD BRONZE

### COFFEE AND TEA



ESPRESSO CUP, COMPLETE  
V 0.10 l, 3 1/2 oz · 010179-17580-1



COFFEE CUP, COMPLETE  
V 0.16 l, 5 5/8 oz · 010179-17582-1



COFFEE POT  
V 1.5 l, 52 3/4 oz · 010179-17695-1



TEAPOT  
V 1.3 l, 45 3/4 oz · 010179-17727-1



CREAMER  
V 0.33 l, 11 5/8 oz · 010179-17764-1



SUGAR BOWL  
H 13.5 cm, 5 3/8" · 010179-17823-1

### BOWLS AND DISHES



BOWL WITH LID  
V 0.7 l, 24 5/8 oz · 010179-17381-1



BOWL  
Ø 27.5 cm, 10 7/8" · 010179-17442-1



ROASTING PLATTER  
L 36 cm · 010179-17308-1



DESSERT DIASH  
Ø 14.8 cm, 5 7/8" · 010179-17411-1



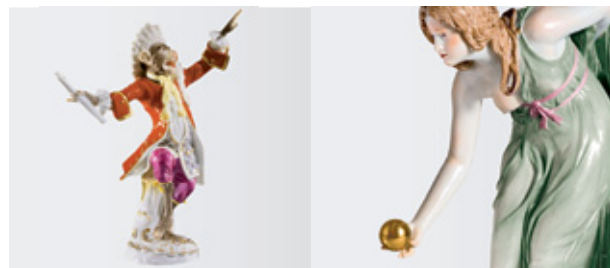
SAUCE BOAT  
V 0.40 l, 14 1/8 oz · 010179-17228-1

# THE PRODUCT WORLD OF MEISSEN®

MEISSEN® is Europe's most tradition-rich house of fine art and hand-crafted luxury. Since it was established in 1710, the Manufactory stands for the exciting combination of unique craftsmanship and exceptional aesthetics. Discover the whole world of MEISSEN®!

## TABLEWARE & DECO

fine dining arrangements, gifts, accessories, vases,  
lights & candlesticks, crystal, cushions & leather cushions,  
paintings on leather

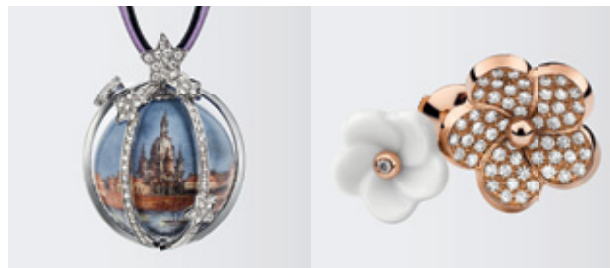


## ART WORKS & FIGURINES

exclusive collections, annual limited editions,  
serial collectibles, unique historical pieces

## ARCHITECTURE & INTERIORS

chairs, paravents, silk rugs, mirrors,  
wall consoles, chandeliers



## JEWELLERY & WATCHES

rings, pendants, bracelets, bangles,  
earrings, necklaces, engagement rings, cufflinks, chains,  
watches, writing instruments

## COUTURE & ACCESSOIRES

cocktail and evening dresses, leather bags, leather accessories,  
silk squares, silk shawls, cashmere shawls, cravats and pocket squares



©MEISSEN® 2016. All rights reserved.

Unless otherwise stated, all documents, images and information in this catalogue are the property of the Staatliche Porzellan-Manufaktur Meissen GmbH or relevant rights of use exist on behalf of MEISSEN®.

Photo credits: Dirk Weyer (2), Fotodesign Gasparini (22), Maik Krause/Manufaktur Meissen (150), Schoettger Photography (2)

The use of texts and/or images, including excerpts, is only permitted with the prior written consent of the Staatliche Porzellan-Manufaktur Meissen GmbH; this naturally also applies to reproductions, disseminations, changes, etc. in information and telecommunication services of all kinds. The illustrated marks and designs are protected by law; any use and/or usage, in whatever form, is expressly prohibited without the prior written consent of the Staatliche Porzellan-Manufaktur Meissen GmbH.

MEISSEN® is synonymous with the highest quality handcrafted art objects in porcelain. Every piece is unique in its shape and décor, and each is distinguished by the characteristic “handwriting” of its designer and painter; minor differences between the actual piece and its illustration in the catalogue underscore the individuality of each item's fabrication. Furthermore, the dimensions of the artefacts are subject to minor variations caused by factors inherent to ceramic technology.

MEISSEN®, MEISSEN PORCELAIN®, Böttgersteinzeug® and Crossed Swords® are registered trademarks of the Staatliche Porzellan-Manufaktur Meissen GmbH.

www.meissen.com – phone MEISSEN® Customer dialogue: +49 (0)3521/468 6638





XX  
MEISSEN  
1710