

SWAN DESIGN



XX
MEISSEN
1710

S

SWAN DESIGN

THE PERFECTION OF BAROQUE DINING CULTURE



An impressive tribute to the glamorous past era and the opus magnum of German Baroque art: the world-famous “Swan service”. With over 2200 pieces, it is the most elaborate service of all time.

The relief that gives it its name is a pair of swans swimming through reeds, encased by a seashell lip. We have the elite taste of Count Heinrich von Brühl to thank for its creation in the mid-18th century, who was Minister of Saxony and a



favourite of the King and among whose responsibilities and passions was the management of the royal porcelain manufactory Meissen. Commissioned by him, master modeller Johann Joachim Kaendler worked together with Johann Friedrich Eberlein and Johann Gottlieb Ehder from 1737 to 1742 on the implementation of this service of the century and in doing so created a true legacy for themselves and the manufactory.

The Prime Minister's love for opulence and the genius of the porcelain sculptors resulted in the creation of the "Swan service". Never before had a service been created with a comparably lavish richness of sculptural design.

Still shaped and painted by hand, this historic service from the court of Augustus the Strong still graces elegant tables today and is a very important part of the MEISSEN® tradition.







SWAN DESIGN WHITE

A relief in the form of the swimming pair of swans, made by hand on brilliantly glossy MEISSEN PORCELAIN®. The swan plays an important role, not only Greek mythology. It was also an extraordinary creature for the Romans, who believed that the gods could transform themselves and others into swans. In Christian symbolism, the white bird embodies purity and divine grace. The famous “Swan Design” in pure white – the Baroque masterpiece from the heyday of the Meissen manufactory perfectly bridges the gap between the glorious artistic past and the high art of fine dining. Something only true classics are able to do.



SETS SWAN DESIGN WHITE



COFFEE SET
8-piece set: 2 coffee cups, 2 saucers, 1 creamer,
1 sugar bowl, 2 dessert plates in white
000001-C0502-1



COFFEE SERVING SET
6-piece set: 2 coffee cups, 2 saucers,
2 dessert plates in white
000001-C0504-1



BREAKFAST SET
3-piece set: 1 coffee mug, 1 dessert plate,
1 dessert dish in white
000001-C0516-1



DINNER SET
6-piece set: 2 soup plates, 2 underplates,
2 dinner plates in white
000001-C0506-1



DINNER PLATE SET
2-piece set: 2 dinner plates in white
000001-C0513-1



BREAKFAST SET
3-piece set: 1 coffee mug, 1 dessert plate,
1 egg cup in white
000001-C0507-1



ESPRESSO SET
4-piece set: 2 espresso cups
with 2 saucers in white
000001-C0509-1



COFFEE CUP SET
4-piece set: 2 coffee cups
with 2 saucers in white
000001-C0505-1



SOUP PLATE SET
2-piece set: 2 soup plates in white
000001-C0514-1



DESSERT DISH SET
2-piece set: 2 dessert dishes in white
000001-C0515-1



DESSERT PLATE SET
2-piece set: 2 dessert plates in white
000001-C0512-1



COFFEE MUG SET
2-piece set: 2 coffee mugs in white
000001-C0508-1



MUG SET
2-piece set: 2 mugs in white
000001-C5503-1



TEA SET
8-piece set: 2 tea cups, 2 saucers, 1 pot,
1 sugar bowl, 2 dessert plates in white
000001-C0503-1



SIDE DISH SET
2-piece set: 2 side dishes in white
000001-C0511-1



EGG CUP SET
2-piece set: 2 egg cups in white
000001-C0510-1



COLLECTION SWAN DESIGN WHITE

PLATES



BREAD PLATE
Ø 16.5 cm, 6 1/2" · 000001-05470-1



DESSERT PLATE
Ø 20 cm, 7 7/8" · 000001-05472-1



STARTER PLATE
Ø 22 cm, 8 5/8" · 000001-05473-1



DINNER PLATE
Ø 24.5 cm, 9 5/8" · 000001-05475-1



DINNER PLATE
Ø 28 cm, 11" · 000001-05479-1




CHARGER PLATE
Ø 32 cm, 12 5/8" · 000001-05478-1



SOUP PLATE
Ø 25 cm, 9 7/8" · 000001-05488-1


PLATTERS



CAKE STAND WITH FOOT
Ø 29 cm, 11 3/8" · 000001-05535-1



CAKE PLATTER
Ø 29 cm, 11 3/8" · 000001-05506-1



ROASTING PLATTER, OVAL
L 30 cm, 11 3/4" · 000001-05307-1



ROASTING PLATTER, OVAL
L 34 cm, 13 3/8" · 000001-05308-1



COLLECTION SWAN DESIGN WHITE

COFFEE AND TEA



ESPRESSO CUP, COMPLETE
V 0.10 l, 3 1/2 oz · 000001-05580-1



COFFEE CUP, COMPLETE
V 0.15 l, 5 1/4 oz · 000001-05585-1



CAPPUCCINO CUP, COMPLETE
V 0.25 l, 8 3/4 oz · 000001-05587-1



TEA CUP, COMPLETE
V 0.14 l, 5 oz · 000001-05584-1



COFFEE MUG
V 0.20 l, 7 oz · 000001-05576-1



COFFEE POT
V 1.0 l, 35 1/4 oz · 000001-05694-1



TEAPOT
V 0.65 l, 22 7/8 oz · 000001-05726-1



SUGAR BOWL
H 10.5 cm, 4 1/8" · 000001-05827-1



CREAMER
V 0.15 l, 5 1/4 oz · 000001-05763-1



BOWLS AND DISHES



DESSERT DISH
Ø 16.5 cm, 6 1/2" · 000001-05411-1



BOWL
Ø 18 cm, 7 1/8" · 000001-05440-1



SERVING BOWL
Ø 30 cm, 11 3/4" · 000001-05422-1



SMALL DISH, OVAL
L 13 cm, 5 1/8" · 000001-05283-1



SMALL DISH, OVAL
L 15 cm, 5 7/8" · 000001-05284-1



SIDE DISH, SEASHELL SHAPE
L 16 cm, 6 1/4" · 000001-05260-1



SIDE DISH, SQUARE
L 22 cm, 8 5/8" · 000001-05277-1



SIDE DISH, SQUARE
L 26.5 cm, 10 1/2" · 000001-05275-1



SIDE DISH, WITH HANDLE
L 33.5 cm, 13 1/4" · 000001-05276-1





COLLECTION SWAN DESIGN WHITE

ACCESSORIES



MUG
H 9.2 cm, 3 5/8" · 000001-55401-1



EGG CUP
H 7 cm, 2 3/4" · 000001-05179-1



WINE JUG
H 22.5 cm, 8 7/8" · 000001-55421-1



SOUP CUP
V 0.20 l, 7 oz · 000001-05081-1



SAUCE BOAT
V 0.25 l, 8 3/4 oz · 000001-05228-1



DOLPHIN CANDLEHOLDER
H 6.5 cm, 2 1/2" · a 000001-79186-1



CENTREPIECE
H 23.5 cm, 9 1/4" · 000001-80574-1

SWAN DESIGN GOLD RIM

A combination of a relief that rewrote art history and fine white MEISSEN PORCELAIN® – the recipe for a timeless and elegant classic. The high-karat gold rim gives this service ensemble a sense of nobility that is truly fitting for a service of this size and beauty.



SETS SWAN DESIGN GOLD RIM



COFFEE SET
8-piece set: 2 coffee cups, 2 saucers, 1 creamer,
1 sugar bowl, 2 dessert plates with gold rim
999952-C0502-1



COFFEE SERVING SET
6-piece set: 2 coffee cups, 2 saucers,
2 dessert plates with gold rim
999952-C0504-1



ESPRESSO SET
4-piece set: 2 espresso cups,
2 saucers with gold rim
999952-C0509-1



COFFEE CUP SET
4-piece set: 2 coffee cups,
2 saucers with gold rim
999952-C0505-1



TEA SET
8-piece set: 2 tea cups, 2 saucers, 1 pot,
1 sugar bowl, 2 dessert plates with gold rim
999952-C0503-1



DINNER SET
6-piece set: 2 dessert plates, 2 dinner plates,
2 soup plates with gold rim
999952-C0506-1

COLLECTION SWAN DESIGN GOLD RIM

PLATES



DESSERT PLATE
Ø 20 cm, 7 7/8" · 999952-05472-1



DINNER PLATE
Ø 24.5 cm, 9 5/8" · 999952-05475-1



DINNER PLATE
Ø 28 cm, 11" · 999952-05479-1



CHARGER PLATE
Ø 32 cm, 12 5/8" · 999952-05478-1



SOUP PLATE
Ø 25 cm, 9 7/8" · 999952-05488-1

COFFEE AND TEA



ESPRESSO CUP, COMPLETE
V 0.10 l, 3 1/2 oz · 999952-05580-1



COFFEE CUP, COMPLETE
V 0.14 l, 5 oz · 999952-05584-1



TEAPOT
V 0.65 l, 22 7/8 oz · 999952-05726-1



CREAMER
V 0.15 l, 5 1/4 oz · 999952-05763-1



SUGAR BOWL
H 10.5 cm, 4 1/8" · 999952-05827-1





COLLECTION SWAN DESIGN GOLD RIM

DISHES



SMALL DISH
L 13 cm, 5 1/8" · 999952-05283-1



SMALL DISH
L 15 cm, 5 7/8" · 999952-05284-1

ACCESSORIES



MUG
H 9.2 cm, 3 5/8" · 999952-55401-1



SWAN DESIGN

INDIAN FLORAL BRANCH

They look fragile, the small blossoms on the innocent white porcelain. The “Indian floral branch”, a typical Biedermeier creation in terms of its fragmentation, is one of the most popular décors in the manufactory. A sophisticated composition of delicate flowers and the unique swan relief: it appears to have always been intended for the sophisticated coffee table of today.



SETS SWAN DESIGN
INDIAN FLORAL BRANCH



COFFEE SET
8-piece set: 2 coffee cups, 2 saucers,
1 creamer, 1 sugar bowl and 2 dessert plates
with floral décor and gold rim
397152-C0502-1



COFFEE SERVING SET
6-piece set: 2 coffee cups,
2 saucers and 2 dessert plates with
floral décor and gold rim
397152-C0504-1



ESPRESSO SET
4-piece set: 2 espresso cups,
2 saucers with floral décor and gold rim
397152-C0509-1



TEA SET
8-piece set: 2 tea cups, 2 saucers, 1 pot,
1 sugar bowl and 2 dessert plates with
floral décor and gold rim
397152-C0503-1



DINNER SET
6-piece set: 2 soup plate,
2 dinner plates, 2 dessert plates with
floral décor and gold rim
397152-C0506-1



COFFEE CUP SET
4-piece set: 2 coffee cups, 2 saucers with
floral décor and gold rim
397152-C0505-1



COFFEE MUG SET
2-piece set: 2 coffee mugs
with floral décor and gold rim
397152-C0508-1



MUG SET
2-piece set: 2 mugs with
floral décor and gold rim
397152-C5503-1



SIDE DISH SET
2-piece set: 2 side dishes
(13 cm, 5 1/8"; 15 cm, 5 7/8")
with floral décor and gold rim
397152-C0511-1



EGG CUP SET
2-piece set: 2 egg cups with
floral décor and gold rim
397152-C0510-1



COLLECTION SWAN DESIGN

INDIAN FLORAL BRANCH

PLATES



BREAD PLATE
Ø 16.5 cm, 6 1/2" · 397152-05470-1



DESSERT PLATE
Ø 20 cm, 7 7/8" · 397152-05472-1



DINNER PLATE
Ø 24.5 cm, 9 5/8" · 397152-05475-1



DINNER PLATE
Ø 28 cm, 11" · 397152-05479-1



CHARGER PLATE
Ø 32 cm, 12 5/8" · 397152-05478-1



SOUP PLATE
Ø 25 cm, 9 7/8" · 397152-05488-1

PLATTERS



CAKE STAND WITH FOOT
Ø 29 cm, 11 3/8" · 397152-05535-1



CAKE PLATE
Ø 29 cm, 11 3/8" · 397152-05506-1

COFFEE AND TEA



ESPRESSO CUP, COMPLETE
V 0.10 l, 3 1/2 oz · 397152-05580-1



COFFEE CUP, COMPLETE
V 0.14 l, 5 oz · 397152-05584-1



CAPPUCCINO CUP, COMPLETE
V 0.25 l, 8 3/4 oz · 397152-05587-1



COFFEE POT
V 1.0 l, 35 1/4 oz · 397152-05694-1



TEAPOT
V 0.65 l, 22 7/8 oz · 397152-05726-1



CREAMER
V 0.15 l, 5 1/4 oz · 397152-05763-1



SUGAR BOWL
H 10.5 cm, 4 1/8" · 397152-05827-1

BOWLS AND DISHES



SMALL DISH, OVAL
L 13 cm, 5 1/8" · 397152-05283-1



SMALL DISH, OVAL
L 15 cm, 5 7/8" · 397152-05284



BOWL
Ø 18 cm, 7 1/8" · 397152-05440



SIDE DISH, ROUND
Ø 30 cm, 11 3/4" · 397152-05422-1



ROASTING PLATTER, OVAL
L 30 cm, 11 3/4" · 397152-05307-1



ROASTING DISH, OVAL
L 34 cm, 13 3/8" · 397152-05308-1



SIDE DISH, SQUARE
L 22 cm, 8 5/8" · 397152-05277-1



SIDE DISH, SQUARE
L 33.5 cm, 13 1/4" · 397152-05276-1

COLLECTION SWAN DESIGN
INDIAN FLORAL BRANCH

ACCESSORIES



MUG

H 9.2 cm, 3 5/8" · 397152-55401-1



EGG CUP

H 7 cm, 2 3/4" · 397152-05179-1



SAUCE BOAT

V 0.25 l, 8 3/4 oz · 397152-05228-1



SOUP CUP, COMPLETE

V 0.20 l, 7 oz · 397152-05081-1

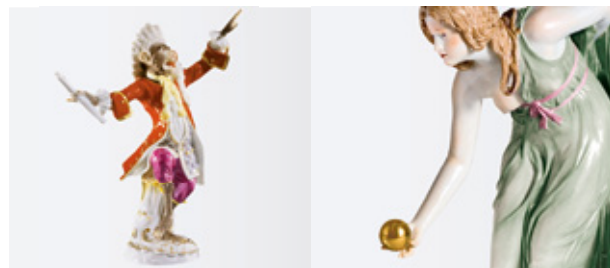


THE PRODUCT WORLD OF MEISSEN®

MEISSEN® is Europe's most tradition-rich house of fine art and hand-crafted luxury. Since it was established in 1710, the Manufactory stands for the exciting combination of unique craftsmanship and exceptional aesthetics. Discover the whole world of MEISSEN®!

TABLEWARE & DECO

fine dining arrangements, gifts, accessories, vases,
lights & candlesticks, crystal, cushions & leather cushions,
paintings on leather

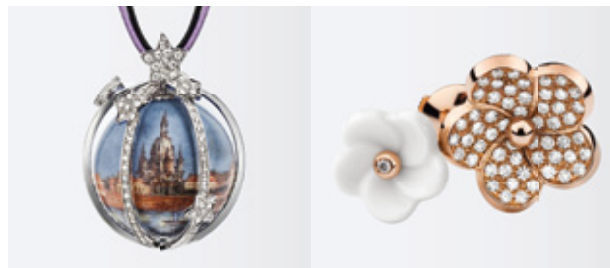


ART WORKS & FIGURINES

exclusive collections, annual limited editions,
serial collectibles, unique historical pieces

ARCHITECTURE & INTERIORS

chairs, paravents, silk rugs, mirrors,
wall consoles, chandeliers



JEWELLERY & WATCHES

rings, pendants, bracelets, bangles,
earrings, necklaces, engagement rings, cufflinks, chains,
watches, writing instruments

COUTURE & ACCESSOIRES

cocktail and evening dresses, leather bags, leather accessories,
silk squares, silk shawls, cashmere shawls, cravats and pocket squares



©MEISSEN® 2016. All rights reserved.

Unless otherwise stated, all documents, images and information in this catalogue are the property of the Staatliche Porzellan-Manufaktur Meissen GmbH or relevant rights of use exist on behalf of MEISSEN®.

Photo credits: Dirk Weyer (2), Fotodesign Gasparini (14), Maik Krause/Manufaktur Meissen (113), Schoettger Photography (2)

The use of texts and/or images, including excerpts, is only permitted with the prior written consent of the Staatliche Porzellan-Manufaktur Meissen GmbH; this naturally also applies to reproductions, disseminations, changes, etc. in information and telecommunication services of all kinds. The illustrated marks and designs are protected by law; any use and/or usage, in whatever form, is expressly prohibited without the prior written consent of the Staatliche Porzellan-Manufaktur Meissen GmbH.

MEISSEN® is synonymous with the highest quality handcrafted art objects in porcelain. Every piece is unique in its shape and décor, and each is distinguished by the characteristic "handwriting" of its designer and painter; minor differences between the actual piece and its illustration in the catalogue underscore the individuality of each item's fabrication. Furthermore, the dimensions of the artefacts are subject to minor variations caused by factors inherent to ceramic technology.

MEISSEN®, MEISSEN PORCELAIN®, Böttgersteinzeug® and Crossed Swords® are registered trademarks of the Staatliche Porzellan-Manufaktur Meissen GmbH.

www.meissen.com – phone MEISSEN® Customer dialogue: +49 (0)3521/468-6635